
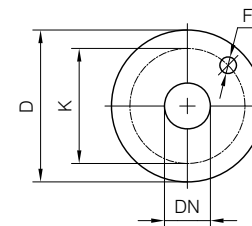
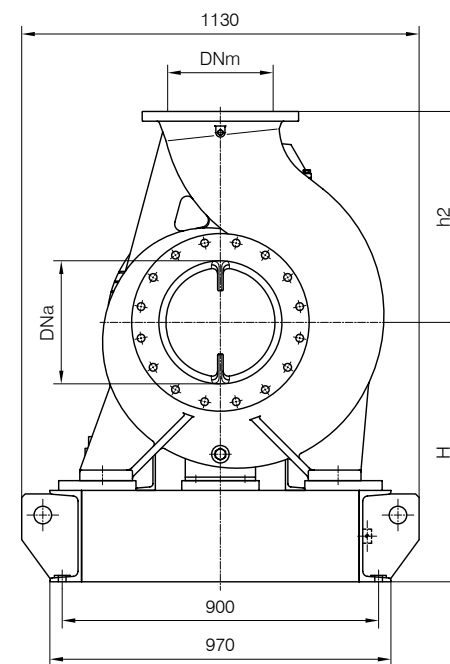
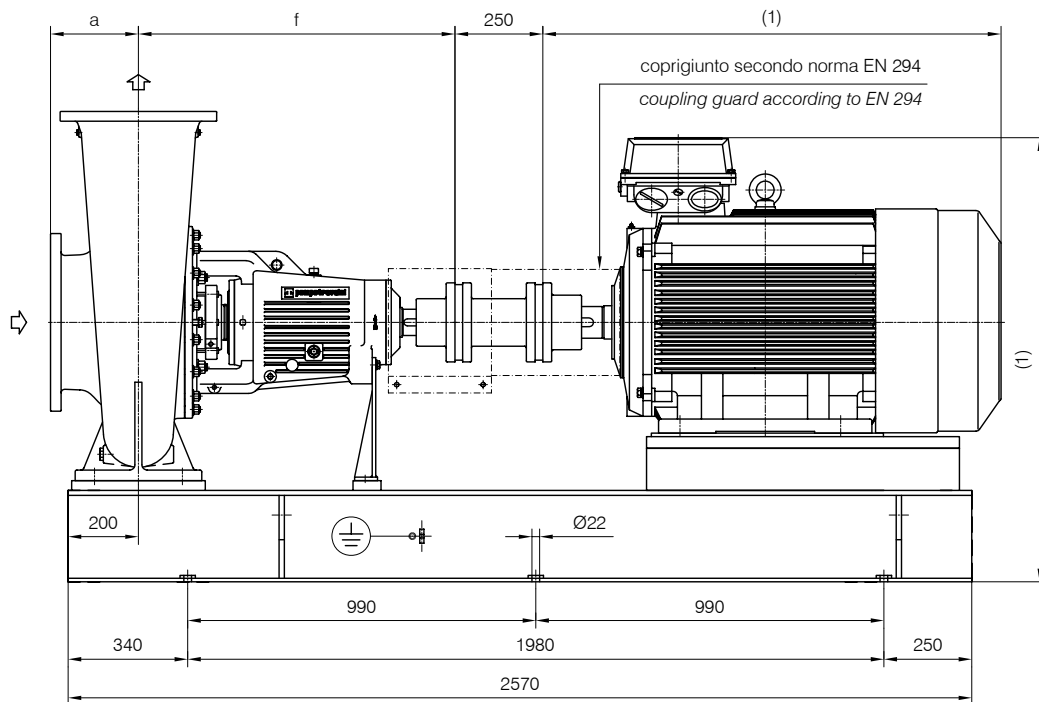


DIMENSIONE DI INGOMBRO / Overall dimensions
 POMPE CENTRIFUGHE AUTODESCANTI
 Self-priming centrifugal pumps
 SERIE / Series
TCH TCN / 1 gr.5


pompastravaini
 CASTANO PRIMO (MILANO)
 S.p.A.

Versione **ACCOPPIATA (BASE-GIUNTO SPAZIATORE)**

COUPLED construction (BASEPLATE-SPACER COUPLING)



FLANGE: Dimensioni secondo UNI 2223 PN10
 FLANGES: Dimensions according to UNI 2223 NP10

Dimensioni flange Flanges dimensions				
DNa-DNm	D	K	F	N° fori holes
250	395	350	22	12
300	445	400	22	12
350	505	460	22	16

Grandezza Frame size IEC	MOTORI ELETTRICI Electric Motors			
	Giri/min. RPM 740 50Hz		Giri/min. RPM 980 50Hz	
	kW	HP	kW	HP
280 M	45	60	55	75
315 S	55	75	75	100
315 M	75	100	90	125
315 L	90	125	110	150
315 L	110	150	132	175
355 L	132	175	160	215
355 L	160	215	200	270
355 L	200	270	250	335

Grandezza IEC in funzione della marca del motore installato.
 Frame size IEC depend on installed motor manufactured.

(1) Dimensioni in funzione della marca del motore installato.
 (1) Dimensions depend on installed motor manufacturer.

POMPA TIPO Pump type	Dimensioni costruttive Construction dimensions						Basamento tipo Baseplate type	Peso Weight
	DNa	DNm	a	f	H	h2		
TCH 250-450	300	250	220	900	688	560	356 F	1270
TCH 300-350	350	300	280	900	768	650	356 F	1320
TCH 300-450	350	300	250	900	738	600	356 F	1290
TCN 250-450	300	250	300	900	688	560	356 F	1305
TCN 300-550	350	300	350	900	768	750	356 F	1470

Disegno schematico. Dimensioni in mm con tolleranze secondo EN 735-1995.
 Pesì indicativi in Kg, riferiti a pompe in ghisa escluso motore, non impegnativi.
 Schematic drawing. Dimensions in mm with tolerances according to EN 735-1995 standards.
 Weights in Kgs, referred to pumps in cast iron without motor, not binding.

RIF. - Ref.: S.V./C.I.T.
 DATA - Date: Luglio '09 July '09

SOSTITUISCE - Replaces: 3603-3705, 115.2201.01
 N°: 3603-3705, 115.2201.02