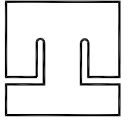


DIMENSIONE D'INGOMBRO / Overall dimensions
 POMPE CENTRIFUGHE AUTOADESCANTI
 Self-priming centrifugal pumps
 SERIE / Series
 TBH 500 / 3

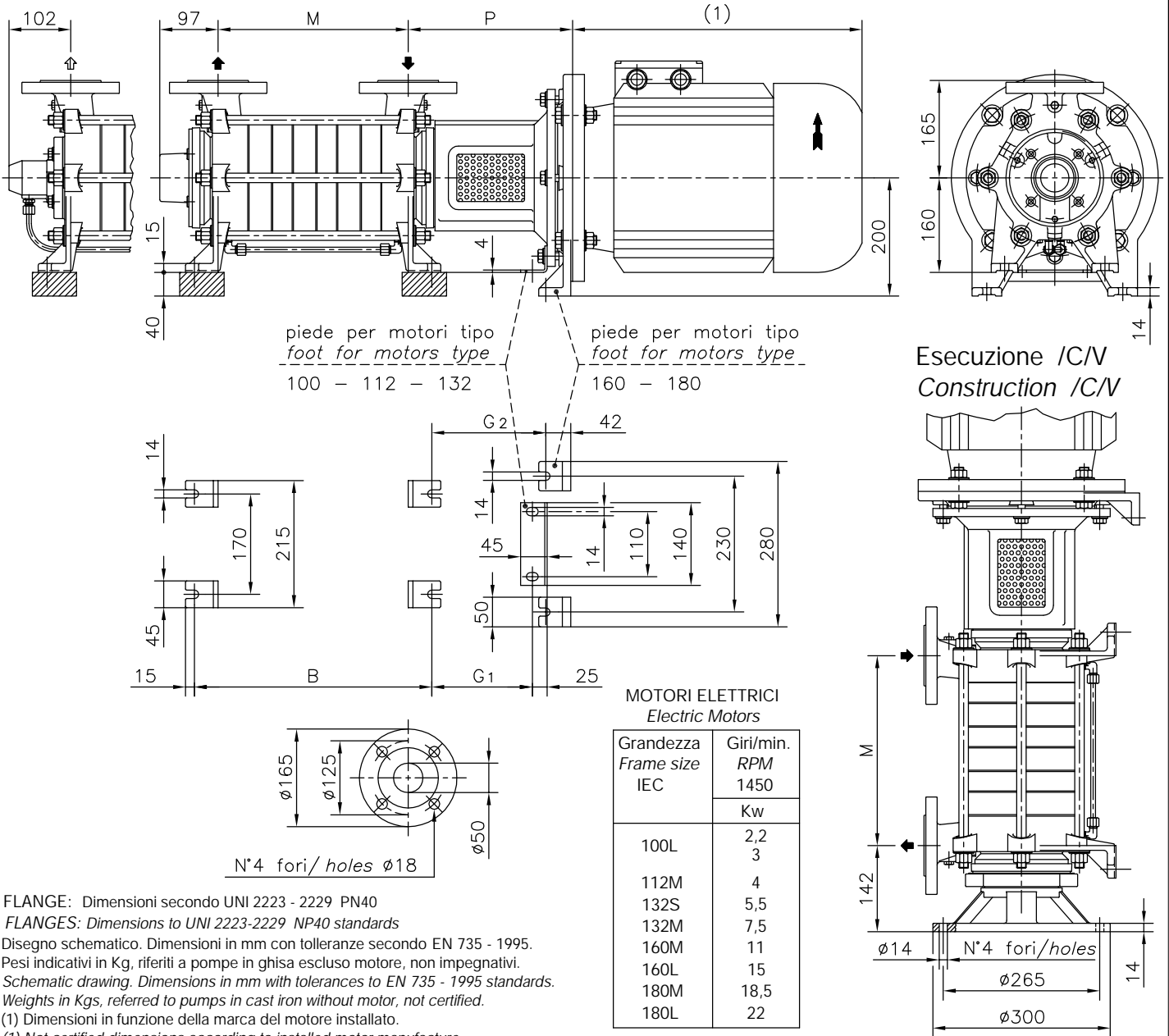
pompetravaini



CASTANO PRIMO (MILANO)

Versione MONOBLOCCO/M CLOSE - COUPLED/M construction

Esecuzione /R Esecuzione /C Construction /C
 Construction /R



FLANGE: Dimensioni secondo UNI 2223 - 2229 PN40
 FLANGES: Dimensions to UNI 2223-2229 NP40 standards
 Disegno schematico. Dimensioni in mm con tolleranze secondo EN 735 - 1995.
 Pesi indicativi in Kg, riferiti a pompe in ghisa escluso motore, non impegnativi.
 Schematic drawing. Dimensions in mm with tolerances to EN 735 - 1995 standards.
 Weights in Kgs, referred to pumps in cast iron without motor, not certified.
 (1) Dimensioni in funzione della marca del motore installato.
 (1) Not certified dimensions according to installed motor manufacture.

POMPA TIPO Pump type	Versione MONOBLOCCO					CLOSE-COUPLED construction					
	M		B		P	motore motor 100 - 112		motore motor 132		motore motor 160 - 180	
	M	B	P	G ₁		Peso Weight	P	G ₁	Peso Weight	P	G ₂
TBH 501	171	251	227.5	147	49	249	172	51	278	194	63
TBH 502	246	326	227.5	147	59	249	172	61	278	194	73
TBH 503	321	401	227.5	147	69	249	172	71	278	194	83
TBH 504	396	476	227.5	147	79	249	172	81	278	194	93
TBH 505	471	551	227.5	147	89	249	172	91	278	194	103
TBH 506	546	626	227.5	147	99	249	172	101	278	194	113
TBH 507	621	701	227.5	147	109	249	172	111	278	194	123
TBH 508	696	776	227.5	147	119	249	172	121	278	194	133

RIF. - Ref.: Z.A./C.T.

SOSTITUISCE - Replaces:

DATA - Date: APRILE 99 - April 99

N°.: 1036.3L2.201.01