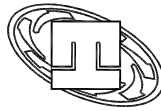
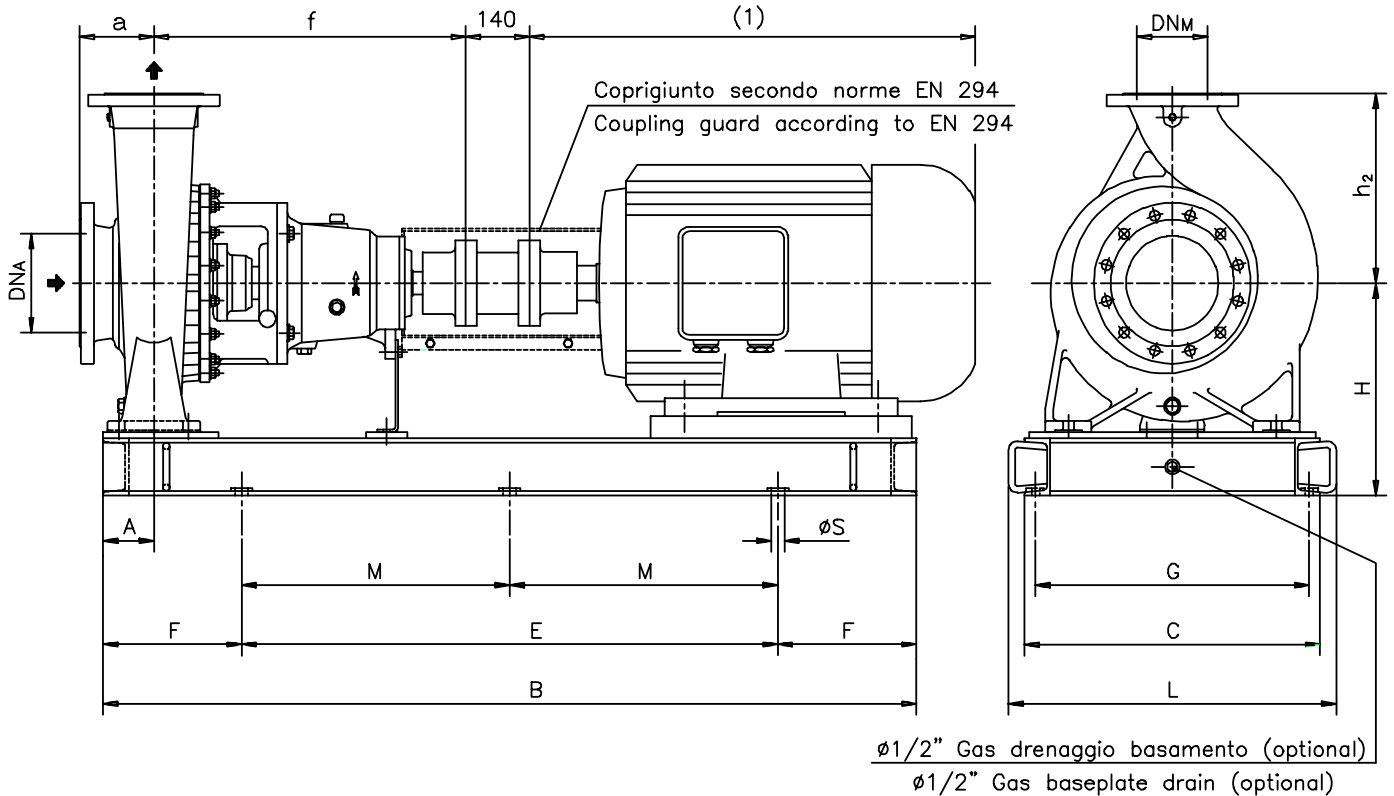


DIMENSIONI D'INGOMBRO
 Overall dimensions
 POMPE CENTRIFUGHE MONOSTADIO
 Monostage centrifugal pumps
 SERIE
 Series **MCU-CH gr. 3-4 NS.** pag.1/2



pompetravaini S.p.A.
 CASTANO PRIMO (MILANO)

Versione **ACCOPIATA (BASE - GIUNTO SPAZIATORE)**
COUPLED construction (BASEPLATE - SPACER COUPLING)



| Pompa tipo <i>Pump type</i> | DIMENSIONI | | | | | | MOTORE ELETTRICO <i>Electric Motor</i> | | | | | | | | | | | |
|--------------------------------|-------------------|-----------------|-----|-----|----------------|-----|--|-----|-----------------------|-----|-----------|-----------------------|------|-----|-----------------------|-----|-----|-----------------------|
| | <i>Dimensions</i> | | | | | | 132S/132M | | 160M/160L | | 180M/180L | | 200L | | 225S/225M | | | |
| | DN _A | DN _M | a | f | h ₂ | A | N° | H | Peso <i>Weight</i> | N° | H | Peso <i>Weight</i> | N° | H | Peso <i>Weight</i> | N° | H | Peso <i>Weight</i> |
| 100-400 | 125 | 100 | 140 | 530 | 355 | 110 | C13 | 413 | 337 | C13 | 413 | 336 | C13 | 413 | 335 | C13 | 413 | 335 |
| 125-400 | 150 | 125 | 140 | 530 | 400 | 110 | | | | C13 | 448 | 348 | C13 | 448 | 346 | C13 | 448 | 345 |
| 150-315 | 200 | 150 | 160 | 670 | 400 | 110 | | | | C13 | 448 | 398 | C13 | 448 | 397 | C13 | 448 | 396 |
| 150-400 | 200 | 150 | 160 | 670 | 450 | 110 | | | | | | | C13 | 448 | 445 | C13 | 448 | 444 |
| 200-315 | 250 | 200 | 180 | 670 | 480 | 110 | | | | | | | C13 | 488 | 466 | C13 | 488 | 464 |
| 200-400 | 250 | 200 | 180 | 670 | 500 | 110 | | | | | | | C13 | 488 | 506 | C13 | 488 | 504 |
| 250-315 | 300 | 250 | 250 | 720 | 560 | 125 | | | | | | | C21 | 578 | 596 | C21 | 578 | 594 |

Disegno schematico. Dimensioni in mm con tolleranze secondo EN 735-1995.
 Pesì indicativi in Kg, riferiti a pompe in esecuzione "F" ghisa escluso motore, non impegnativi.
 Schematic drawing. Dimensions in mm with tolerances to EN 735-1995 standards.
 Weights in Kgs, referred to pump in cast iron "F" construction without motor, not certified.

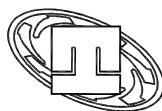
(1) Dimensioni in funzione della marca del motore elettrico installato.
 Not certified dimensions according to installed motor manufacture.

RIF. - Ref.: F.P./C.T.

SOSTITUISCE - Replaces: 2600.105.201.01.A

DATA - Date: SETTEMBRE 2004 - September 2004

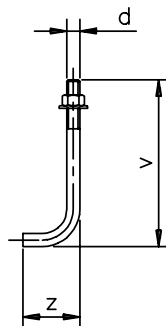
N°.: 2600.105.201.02.A



Versione **ACCOPIATA (BASE - GIUNTO SPAZIATORE)**
COUPLED construction (BASEPLATE - SPACER COUPLING)

BASAMENTI
Base plates

| N° | B | C | E | F | L | M | G | øS | N°fori holes |
|------------|------|-----|------|-----|-----|-----|-----|----|--------------|
| C05 | 1200 | 420 | 800 | 200 | 480 | - | 380 | 16 | 4 |
| C11 | 1350 | 500 | 950 | 200 | 570 | - | 452 | 18 | 4 |
| C13 | 1650 | 640 | 1050 | 300 | 710 | | 592 | 18 | 4 |
| C21 | 1850 | 720 | 1350 | 250 | 792 | 675 | 670 | 22 | 6 |



BULLONI DI FONDAZIONE
 (OPTIONAL)
Foundation bolts

| d | v | z |
|------------|-----|----|
| M14 | 280 | 50 |
| M16 | 350 | 60 |
| M20 | 400 | 80 |

DIMENSIONI FLANGE
Flanges dimensions

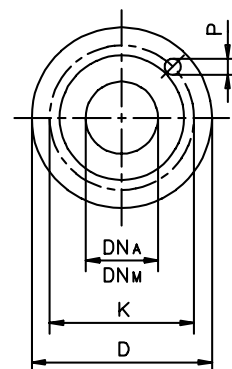
| DN _A -DN _M | D | K | P | N°fori holes |
|----------------------------------|-----|-----|----|--------------|
| 65 | 185 | 145 | 18 | 4 |
| 80 | 200 | 160 | 18 | 8 |
| 100 | 220 | 180 | 18 | 8 |
| 125 | 250 | 210 | 18 | 8 |
| 150 | 285 | 240 | 22 | 8 |
| 200 | 340 | 295 | 22 | 12 |
| 250 | 405 | 355 | 25 | 12 |
| 300 | 460 | 410 | 25 | 12 |

FLANGE:

Dimensioni secondo
 UNI 2223-2229 PN16

FLANGES:

Dimensions to
 UNI 2223-2229 NP16
 standards



MOTORI ELETTRICI
Electric Motors

| Pompa tipo <i>Pump type</i> | MOTORE ELETTRICO <i>Electric Motor</i> | | | | | | | | |
|--------------------------------|--|-----|----------------|-----------|-----|----------------|-----------|-----|----------------|
| | 250M | | | 280S/280M | | | 315S/315M | | |
| | N° | H | Peso Weight | N° | H | Peso Weight | N° | H | Peso Weight |
| 100-400 | C13 | 413 | 334 | C13 | 413 | 333 | | | |
| 125-400 | C13 | 448 | 344 | C13 | 448 | 344 | | | |
| 150-315 | C13 | 448 | 395 | C21 | 493 | 465 | | | |
| 150-400 | C13 | 448 | 444 | C21 | 493 | 502 | C21 | 493 | 505 |
| 200-315 | C13 | 488 | 362 | C21 | 533 | 424 | C21 | 533 | 420 |
| 200-400 | C13 | 488 | 501 | C21 | 533 | 560 | C21 | 533 | 564 |
| 250-315 | C21 | 578 | 593 | C21 | 578 | 593 | C21 | 578 | 591 |

| Grandezza <i>Frame size</i> | Giri/min <i>RPM</i> | Giri/min <i>RPM</i> | Giri/min <i>RPM</i> |
|--------------------------------|------------------------|------------------------|------------------------|
| | 2900 | 1450 | 960 |
| | Kw | Kw | Kw |
| IEC | | | |
| 132S | 5,5-7,5 | 5,5 | 3 |
| 132M | | 7,5 | 4 - 5,5 |
| 160M | 11-15 | 11 | 7,5 |
| 160L | 18,5 | 15 | 11 |
| 180M | 22 | 18,5 | |
| 180L | | 22 | 15 |
| 200L | 30-37 | 30 | 18,5 -22 |
| 225S | | 37 | |
| 225M | 45 | 45 | 30 |
| 250M | 55 | 55 | 37 |
| 280S | 75 | 75 | |
| 280M | 90 | 90 | |
| 315S | 110 | 110 | |
| 315M | 132 | 132 | |

Disegno schematico. Dimensioni in mm con tolleranze secondo EN 735-1995.
 Pesì indicativi in Kg, riferiti a pompe in esecuzione "F" ghisa escluso motore, non impegnativi.
*Schematic drawing. Dimensions in mm with tolerances to EN 735-1995 standards.
 Weights in Kgs, referred to pump in cast iron "F" construction without motor, not certified.*

(1) Dimensioni in funzione della marca del motore elettrico installato.
Not certified dimensions according to installed motor manufacture