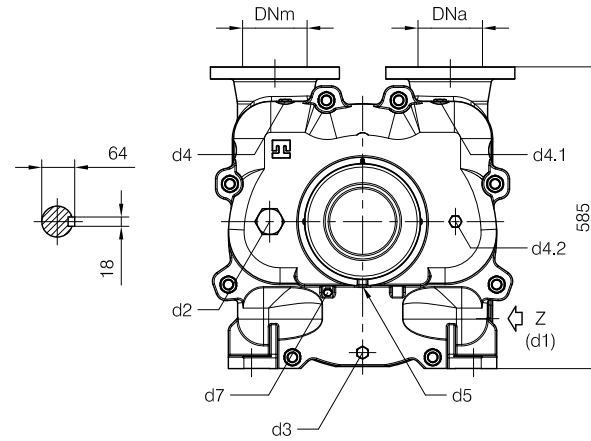


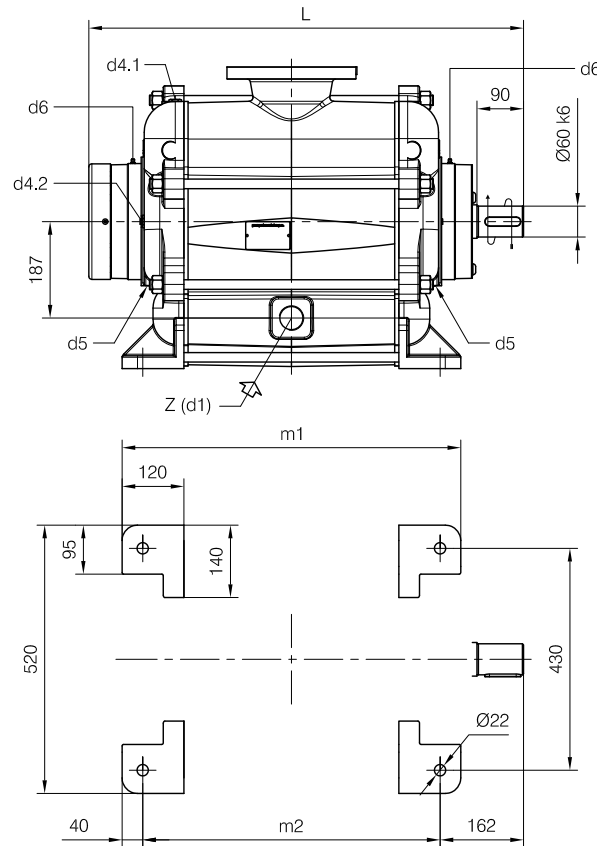


BARESHAF construction



- d1 Connessione filettata G 1 1/2 - per ingresso alimentazione
G 1 1/2 threaded connection - for liquid supply inlet
- d2 Attacco tappato G 1 1/2 - connessione ausiliaria
G 1 1/2 plugged connection - auxiliary connection
- d3 Attacco tappato G 1/2 - per scarico corpo pompa
G 1/2 plugged connection - for pump casing drain
- d4 Attacco tappato G 1/2 - per manovacuometro
G 1/2 plugged connection - for manovacuum gauge
- d4.1 Attacco tappato G 1/2 - per strumentazione ausiliaria
G 1/2 plugged connection - for auxiliary instrumentation
- d4.2 Attacco tappato G 1/2 - per strumentazione ausiliaria
G 1/2 plugged connection - for auxiliary instrumentation
- d5 Connessione filettata G 1/8 - per drenaggio tenute meccaniche
G 1/8 threaded connection - for mechanical seal drain
- d6 Connessione ingrassatore - per lubrificazione cuscinetti tipo NU313E e 22213E
Greaser connection - for ball bearings type NU313E and 22213E lubrication
- d7 Attacco tappato G 1/4 - per valvola anticavitazione
G 1/4 plugged connection - for anticavitation valve

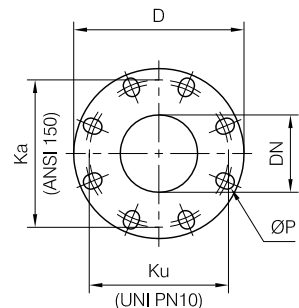
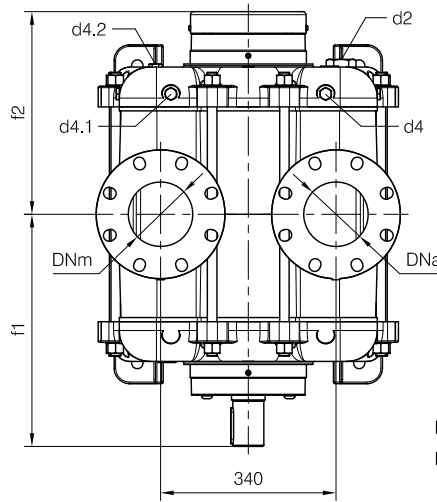
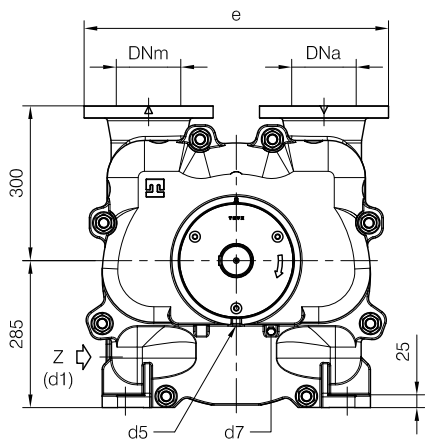
Versione ad **ASSE NUDO**



- Nota / Note :
- Lt Quantità di acqua all'asse dell'albero in litri
Water quantity at shaft axis in liters
 - Mi Momento di Inerzia Max all'avviamento
Max Moment of Inertia at start-up

FLANGE SPECIALI / SPECIAL FLANGES
 Dimensioni foratura secondo UNI 2223 PN10 e ANSI 150
 Drilling dimensions according to UNI 2223 NP10 and ANSI 150

Dimensioni flange / Flanges dimensions					
DNa-DNm	D	Ku	Ka	P	N° fori holes
125	250	210	215.6	22	8



POMPA TIPO Pump type	Dimensioni costruttive / Construction dimensions								Peso Weight	Mi kgm ²	Lt
	DNa	DNm	e	L	f1	f2	m1	m2			
TRVX 1253	125	125	590	703	380	323	517	437	371	2	30
TRVX 1255	125	125	590	773	415	358	587	507	412	2.7	35
TRVX 1257	125	125	590	843	450	393	657	577	437	3.7	40

Disegno schematico. Dimensioni in mm con tolleranze secondo EN 735-1995.
 Pesì indicatìvi in Kg, riferitì a pompe in ghisa escluso motore, non impegnatìvi.
 Schematic drawing. Dimensions in mm with tolerances according to EN 735-1995 standards.
 Weights in Kgs, referred to pumps in cast iron without motor, not binding.