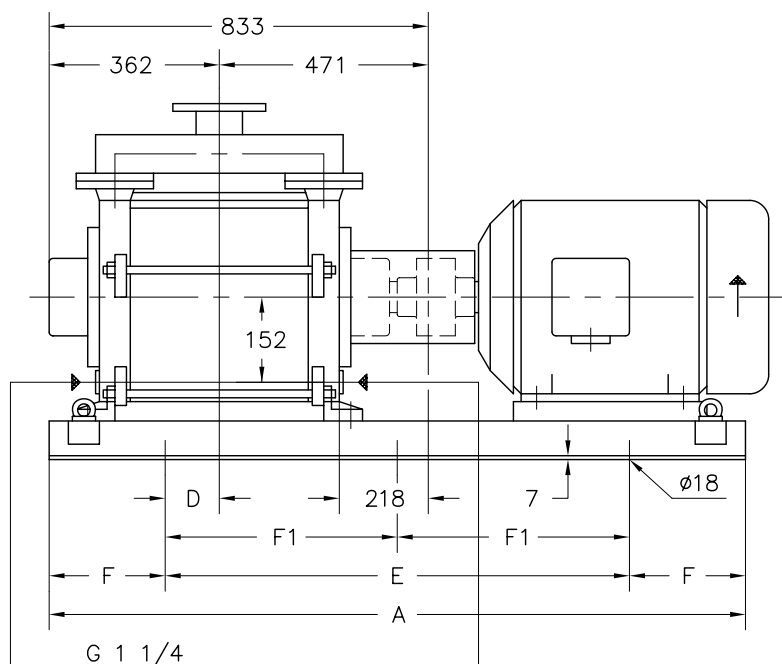
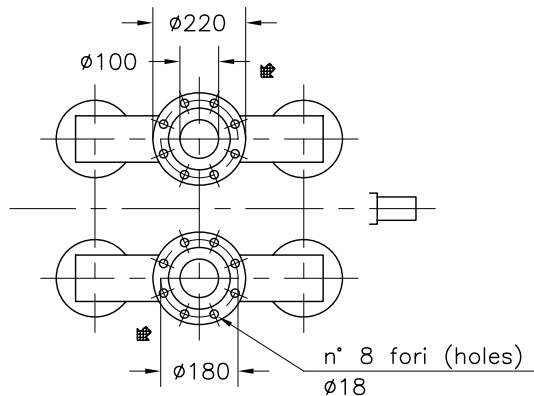
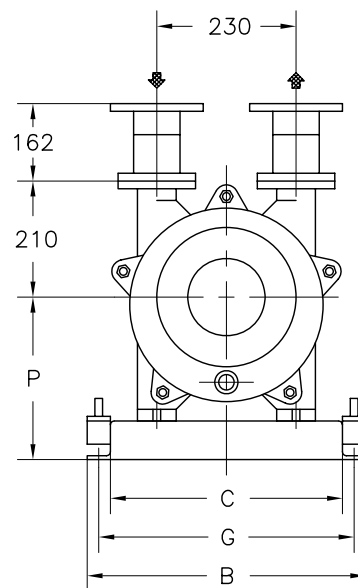


Versione **ACCOPIATA (BASE-GIUNTO)**
COUPLED construction (BASEPLATE-COUPLING)



G 1 1/4

INGRESSO ALIMENTAZIONE
 Liquid supply inlet



FLANGE SECONDO UNI 2223 PN 10
 Flanges according to UNI 2223 NP 10

① PESO ESCLUSO MOTORE
 Weight without motor

MOTORE A 4 POLI 4 Poles Motor UNEL-MEC-B3		BASE Base-plate N°	POMPA Pump								PESO Weight ①	
TIPO/Type	KW		A	B	C	D	E	F	F1	G		P
180 L	22	034	1700	590	450	230	1100	300	-	540	355	380
200 L	30											385
225 S	37											378
225 M	45											378
250 M	55	042	1800	640	500	200	1400	200	700	590	380	418

DISEGNO SCHEMATICO - DIMENSIONI IN MM. CON TOLLERANZE SECONDO EN 735-1995 E PESI IN KG. NON IMPEGNATIVI
 Schematic drawing - Dimensions in mm. with tolerances according to EN 735-1995 and weights in kgs. not binding