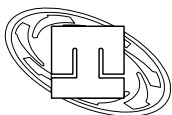
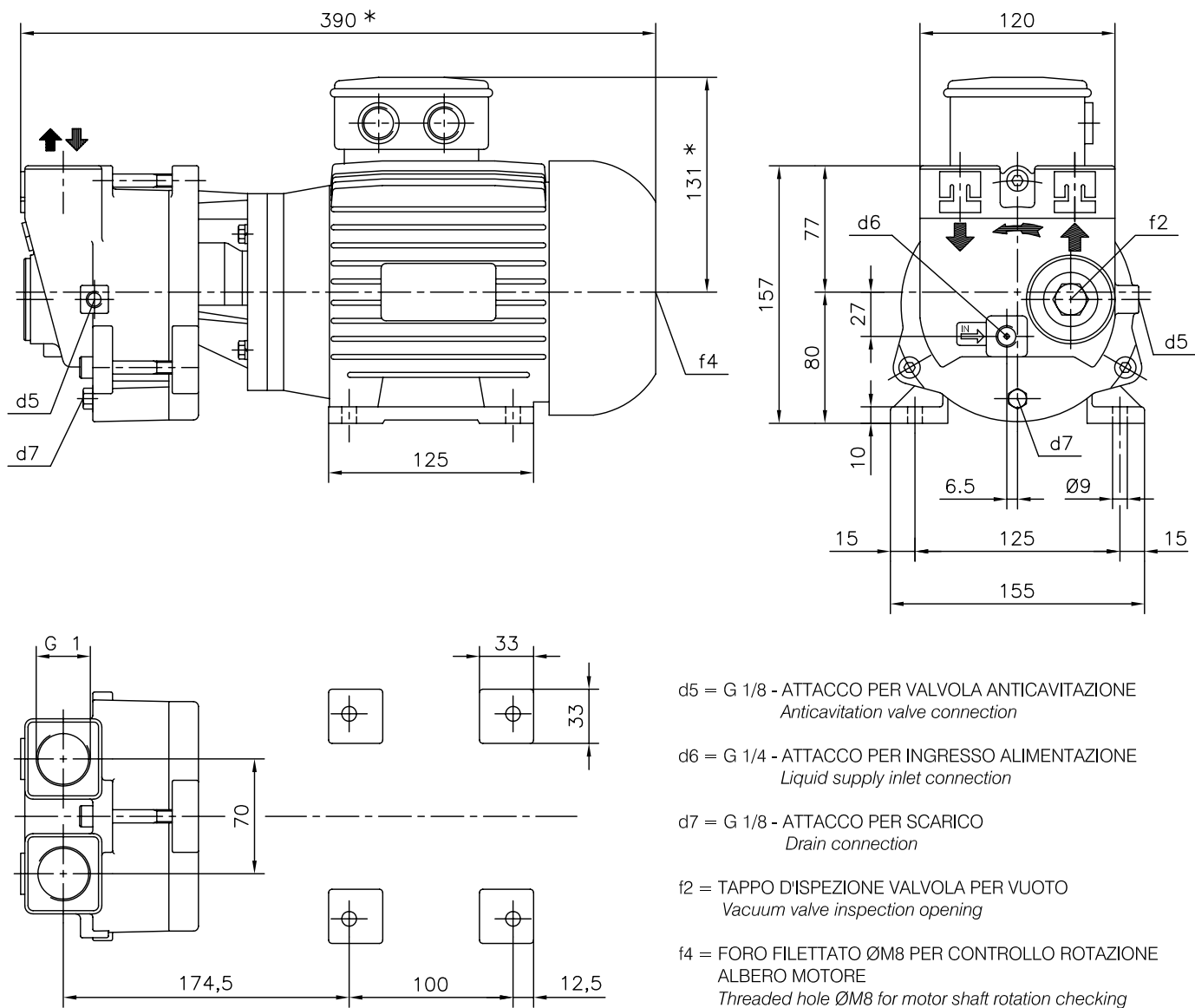


DIMENSIONI D'INGOMBRO / Overall dimensions  
 POMPA PER VUOTO AD ANELLO DI LIQUIDO  
 Liquid ring vacuum pump  
 SERIE / Series  
**TRMB 25-30**



**pompetravaini** S.p.A.

CASTANO PRIMO (MILANO)



\* DIMENSIONE IN FUNZIONE DELLA MARCA DEL MOTORE INSTALLATO / *Not binding dimensions according to installed motor make.*

<b>PESO POMPA</b>	<b>18 Kg</b>
<i>Pump weight</i>	<i>18 Kgs</i>
<b>MOTORE TIPO</b>	<b>80 a 2 POLI - IP 55</b>
<i>Motor type</i>	<i>80 at 2 poles - IP 55</i>
<b>Kw</b>	<b>0,75 / 1,1</b>
<b>Hz</b>	<b>50 / 60</b>
<b>V</b>	<b>220 - 240 / 380 - 415</b>
<b>TENUTA MECCANICA</b>	<b>Ø 22 mm</b>
<i>Mechanical seal</i>	<i>Ø 22 mm.</i>

DISEGNO SCHEMATICO. DIMENSIONI IN mm CON TOLLERANZE SECONDO EN 735-1995.

PESI INDICATIVI IN Kg, RIFERITI A POMPE IN GHISA, NON IMPEGNATIVI.

*Schematic drawing. Dimensions in mm with tolerances according to EN 735-1995.*

*Weights in Ksg, referred to pump in cast iron, not binding.*

RIF. - Ref.: Z.A./C.T.

SOSTITUISCE - Replaces:

DATA - Date: OTTOBRE 98 - October 98

N°.: 7090.1L7.201.01