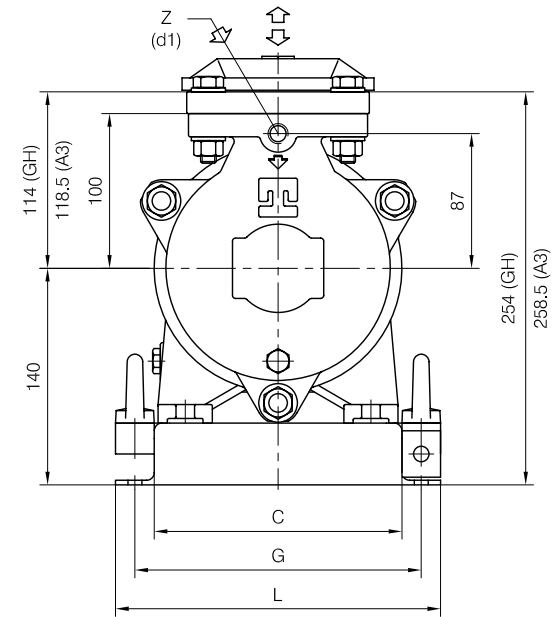
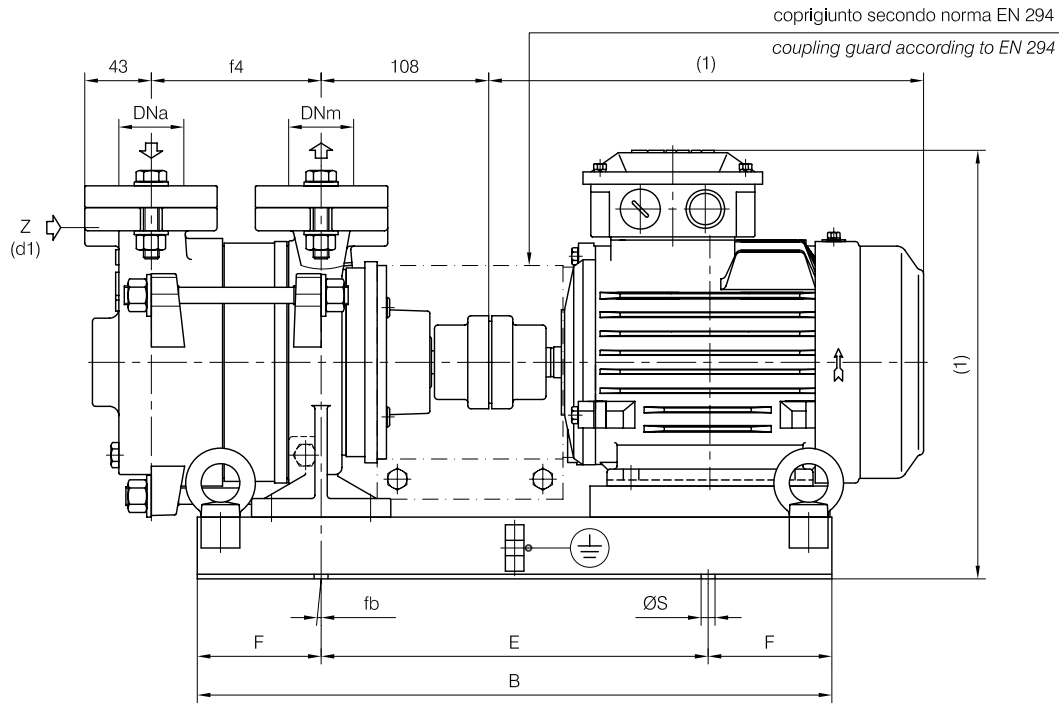


Versione **ACCOPIATA (BASE-GIUNTO)**

COUPLED construction (BASEPLATE-COUPLING)



d1 Connessione filettata G 1/4 - per ingresso alimentazione
G 1/4 Gas threaded connection - for liquid supply inlet

(1) Dimensioni in funzione della marca del motore installato.
(1) Dimensions depend on installed motor manufacturer.

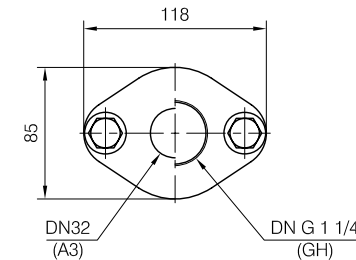
Dimensioni Basamento Baseplate dimensions								
N°	B	C	E	F	L	G	ØS	N° fori holes
905	410	160	250	80	210	185	9	4

MOTORI ELETTRICI Electric Motors B3 - 4 poli / poles			
Grandezza Frame size IEC	Giri/min. RPM 1480 50Hz		
	kW	HP	
80	0.55	0.75	
80	0.75	1	

(GH) Pompa in ghisa e sue derivate / Cast iron pumps and derivatives

(A3) Pompa in acciaio inox e sue derivate / Stainless steel pumps and derivatives

CONTROFLANGE FILETTATE:
Dimensioni secondo UNI 2224 PN6
THREADED COMPANION FLANGES:
Dimensions according to UNI 2224 NP6



Disegno schematico. Dimensioni in mm con tolleranze secondo EN 735-1995.
Pesi indicativi in Kg, riferiti a pompe in ghisa escluso motore, non impegnativi.
Schematic drawing. Dimensions in mm with tolerances according to EN 735-1995 standards.
Weights in Kgs, referred to pumps in cast iron without motor, not binding.

POMPA TIPO Pump type	Dimensioni costruttive Construction dimensions					
	DNa	DNm	f4	fb	Basamento tipo Baseplate type	Peso Weight
TRHE 32-4	G 1 1/4 (GH)	G 1 1/4 (GH)	110	0	905	29
	32 (A3)	32 (A3)				

DIMENSIONE D'INGOMBRO / Overall dimensions
POMPE PER VUOTO AD ANELLO DI LIQUIDO
Liquid ring vacuum pumps
SERIE / Series
TRHE 32-4 / C



pompetravaini
CASTANO PRIMO (MILANO)
S.p.A.