



Does not interfere with production

Toftejorg SaniMidget Retractor, A Retractable Rotary Spray Head

Application

The Toftejorg SaniMidget Retractor is installed where fully automated and validated cleaning can assure higher productivity due to less cleaning time in e.g. spray drying applications within the food, ingredients and pharmaceutical industry. Larger ducts, channels, cyclones, chambers, complexed reactors, vent lines etc. can therefore be cleaned to the highest standards with no manual or semi automated interference, and avoiding any product carry over or hazardous incidents.

Working principle

The Toftejorg SaniMidget Retractor is available with two styles of retracting mechanisms: Pneumatic Driven, which uses air pressure to extend and retract the cleaning head, and Media Driven, which uses the pressure of the cleaning media to extend the cleaning head and an integrated spring to retract it. The Rotary Spray Head creates a fan of fluid in a swirling pattern. The distribution pattern of the cleaner head generates a vibrating impact as well as cascading flow coverage of all internal surfaces of the tank.



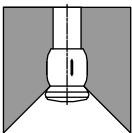
TECHNICAL DATA

Lubricant: Self-lubricating with the cleaning media
 Wetting radius: Max. 3.5 m
 Impact cleaning radius: Max. effective 1.7 m
 Air quality:
 Clean, filtered: max. 40µm
 Dry, dew point: max. 10°
 Installation: Please contact Alfa Laval for installation of the tank cleaning machine

Pressure

Working pressure: 2-5 bar
 Recommended pressure: 3 bar
 Air supply pressure: 2-5 bar

Spray Pattern



270° up

Standard Design

The Toftejorg SaniMidget Retractor is available in three stroke lengths: 100 mm, 150 mm and 250 mm, in either pneumatic- or media-driven versions.

Certificates

2.2 or 3.1 material certificate or ATEX.

PHYSICAL DATA

Materials

Product area: 316L (UNS S31603), PEEK*
 Non-product area: 304 (UNS S30400), POM
 Sealing: EPDM*

* FDA compliance 21CFR§177

Surface finish:

Product contact surfaces: Ra 0.8µm

Standard Surface finish:

Product contact parts: Ra 0.8µm

Non product contact parts Ra 1.6µm

Temperature

Max. working temperature: 95°C

Max. ambient temperature: 150°C

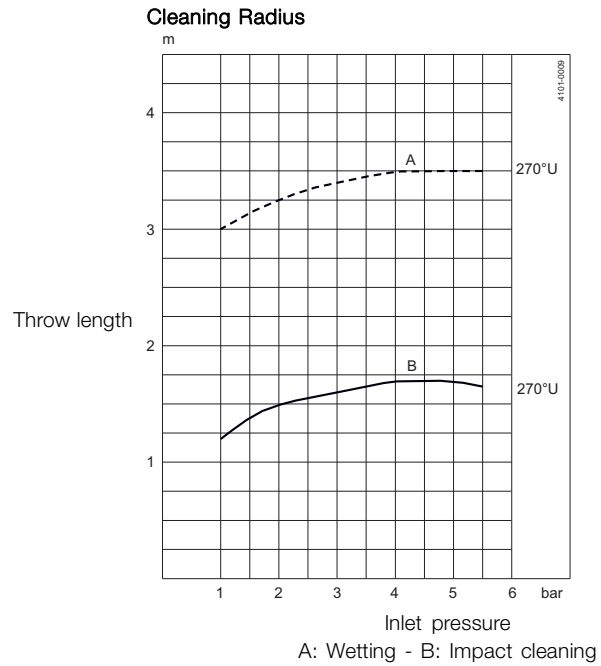
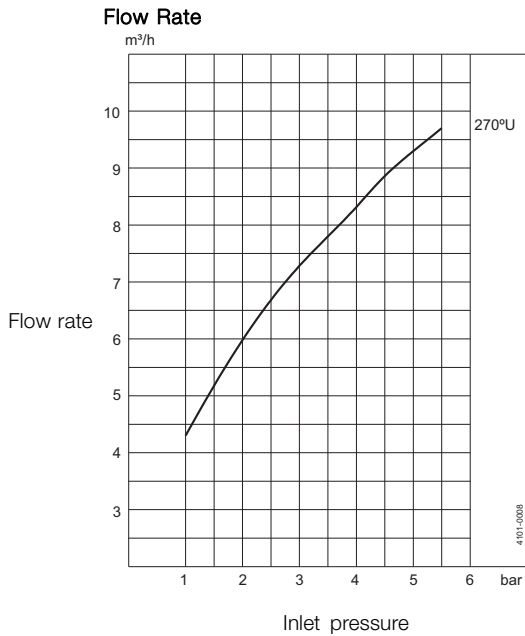
Weight: See reverse page

Options - Materials

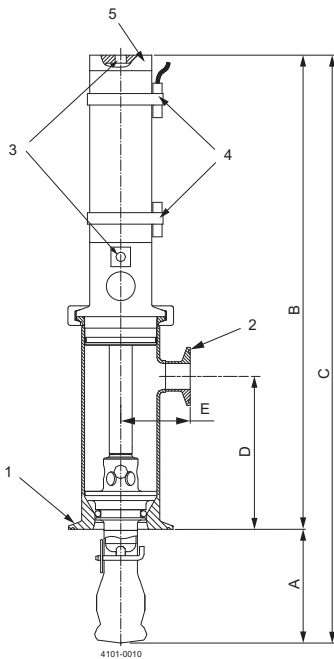
- A. Hastelloy C22 product contact part only!
- B. Alternative sealing component material, FPM*, FFKM*
- C. Positioning sensors, which generate digital signals at the fully retracted or fully extended positions
- D. 3.1. certificate for metallic parts available upon request

* FDA compliance 21CFR§177





Dimensions (mm)



Pneumatic version

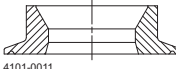
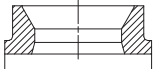
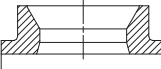
Stroke	A	B	C	D	E	Weight
100	100	410	510	133	58.5	5.0 kg
150	150	510	660	183	58.5	5.5 kg
250	250	710	960	283	58.5	6.4 kg

Media driven

Stroke	A	B	C	D	E	F	Weight
100	100	491	591	133	∅76.1	∅85	5.6 kg
150	150	621	771	183	∅76.1	∅85	6.3 kg
250	250	869	1119	283	∅76.1	∅85	7.4 kg

Connections

1. Tank connections
2. Cleaning media
1" Clamp ISO 2852
3. Air supply - pneumatic driven only
ISO 228-G 1/8
4. Option
Magnetic sensor
5. Adjustable valve - media driven only

Tank Connection		
Clamp	Welded	Welded
		
4101-0011	E	F
3" Clamp ISO 2852	3" ISO 2037/US	DN80 DIN 11.850

Alfa Laval reserves the right to change specifications without prior notification. ALFA LAVAL is a trademark registered and owned by Alfa Laval Corporate AB.

ESE00334EN 1305

© Alfa Laval

How to contact Alfa Laval

Contact details for all countries are continually updated on our website. Please visit www.alfalaval.com to access the information direct.