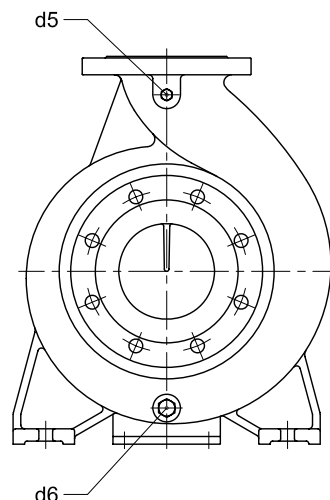
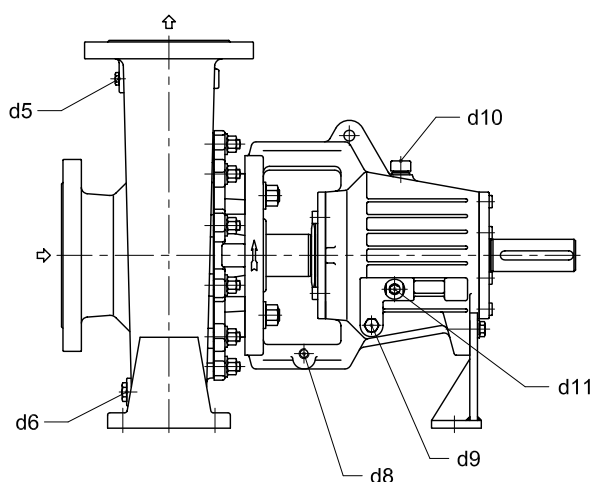


1

POMPA TCH-TCT-TCA /C
Pump TCH-TCT-TCA /C**Denominazione - Legend****Connessioni
Connection**

gr.1 gr.2 gr.3

d1.1	Entrata flussaggio camera tenute doppie in serie	Threaded connection - double tandem mech. seal flushing inlet	G 1/4	G 1/4	G 1/4
d1.2	Uscita flussaggio camera tenute doppie in serie	Threaded connection - double tandem mech. seal flushing outlet	G 1/4	G 1/4	G 1/4
d2.1	Entrata raffredd./riscald. camera tenuta singola o tenute doppie	Threaded connection - mechanical seal cooling liquid inlet	G 1/4	G 3/8	G 3/8
d2.2	Uscita raffredd./riscald. camera tenuta singola o tenute doppie	Threaded connection - mechanical seal cooling liquid outlet	G 1/4	G 3/8	G 3/8
d3.1	Entrata flussaggio camera tenute doppie contrapposte	Threaded connection - double back to back mech. seal flushing inlet	G 1/4	G 1/4	G 1/4
d3.1.1	Entrata flussaggio camera tenute doppie contrapposte	Threaded connection - double back to back mech. seal flushing inlet	G 1/4	G 1/4	G 1/4
d3.2	Uscita flussaggio camera tenute doppie contrapposte	Threaded connection - double back to back mech. seal flushing outlet	G 1/4	G 1/4	G 1/4
d4.1	Entrata riscaldamento corpo	Threaded connection - casing heating chamber liquid inlet	G 1/4	G 3/8	G 3/8
d4.2	Uscita riscaldamento corpo	Threaded connection - casing heating chamber liquid outlet	G 1/4	G 3/8	G 3/8
d5	Connessione tappata per manometro	Plugged connection - for manometer	G 1/4	G 1/4	G 1/4
d6	Connessione tappata drenaggio pompa	Plugged connection - for pump casing drain	Pompa - Pump		
			25-125	G 1/8	-
			25-160	G 1/8	-
			100-200	-	G 1/2
			65-315	-	-
d7.1	Entrata sbarramento baderne	Threaded connection - packing seal flushing liquid inlet from outside	G 1/4	G 1/4	G 1/4
d7.2	Uscita sbarramento baderne	Threaded connection - packing seal flushing liquid outlet from outside	G 1/4	G 1/4	G 1/4
d8	Connessione recupero perdite tenute	Threaded connection - for seal leakages recovery	G 1/4	G 1/4	G 1/4
d9	Connessione tappato scarico olio cuscinetti supporto	Plugged connection - bearings oil drain from housing	G 1/4	G 1/4	G 1/4
d10	Tappo sfiato e carico olio con o senza astina di livello	Plug with dipstick - for bearings oil filling into housing	Ø20	Ø20	Ø20
d11	Livello visivo o oliatore a livello costante	Oil level gauge or constant level oil filler (on request only)	G 1/4	G 1/4	G 1/2
d21.1	Entrata flussaggio quench	Threaded connection - quench liquid inlet	G 1/4	G 1/4	G 1/4
d21.2	Uscita flussaggio quench	Threaded connection - quench liquid outlet	G 1/4	G 1/4	G 1/4
d21.3	Entrata tappata flussaggio quench	Plugged connection - quench liquid inlet	G 1/4	G 1/4	G 1/4
d21.4	Uscita tappata flussaggio quench	Plugged connection - quench liquid outlet	G 1/4	G 1/4	G 1/4

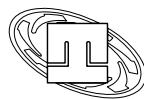
Connessioni secondo norma di Riferimento - UNI EN ISO 228-1 - Filettature di tubazioni per accoppiamento non a tenuta sul filetto
Connections according to Reference - UNI EN ISO 228-1 - Pipe threads where pressure tight joints are not on the thread

RIF. - Ref.: A.P./C.T.

SOSTITUISCE - Replaces: 9000.673.01.01

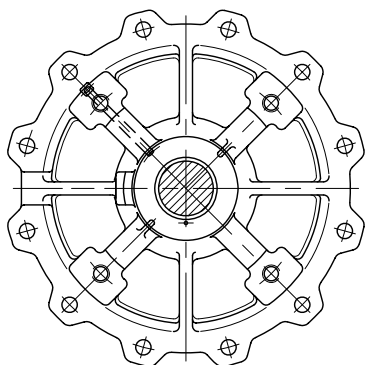
DATA - Date: Maggio '12 - May '12

N°. 9000.673.02.01

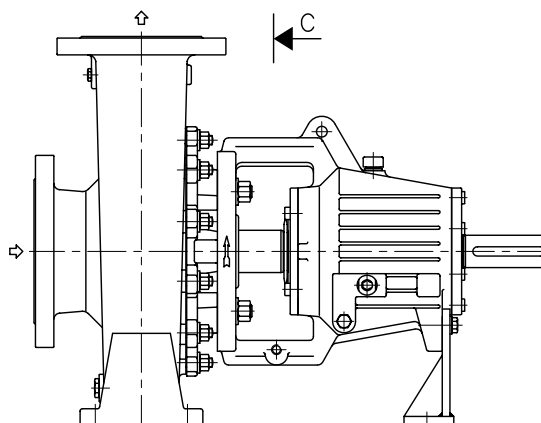


2

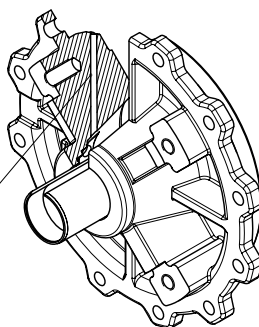
POMPA TCH-TCT-TCA /C API Plan 01
Pump TCH-TCT-TCA /C API Plan 01



PARTICOLARE VISTA C
Detail of view C

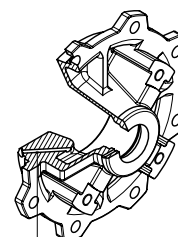


Variante 1
Variant 1



Foro flussaggio interno Plan 01
Internal flushing hole Plan 01

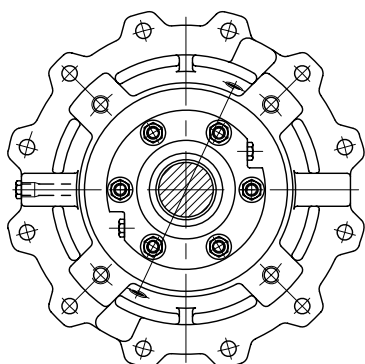
Variante 2
Variant 2



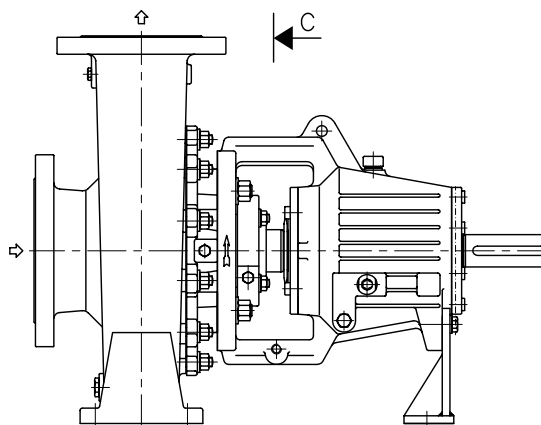
Foro flussaggio interno Plan 01
Internal flushing hole Plan 01

3

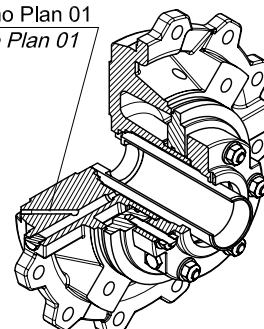
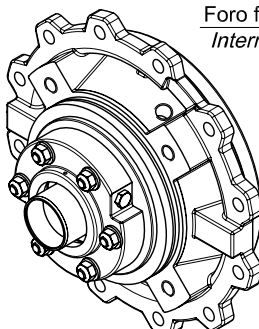
POMPA TCH-TCT-TCA /R API Plan 01
Pump TCH-TCT-TCA /R API Plan 01

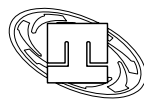


PARTICOLARE VISTA C
Detail of view C



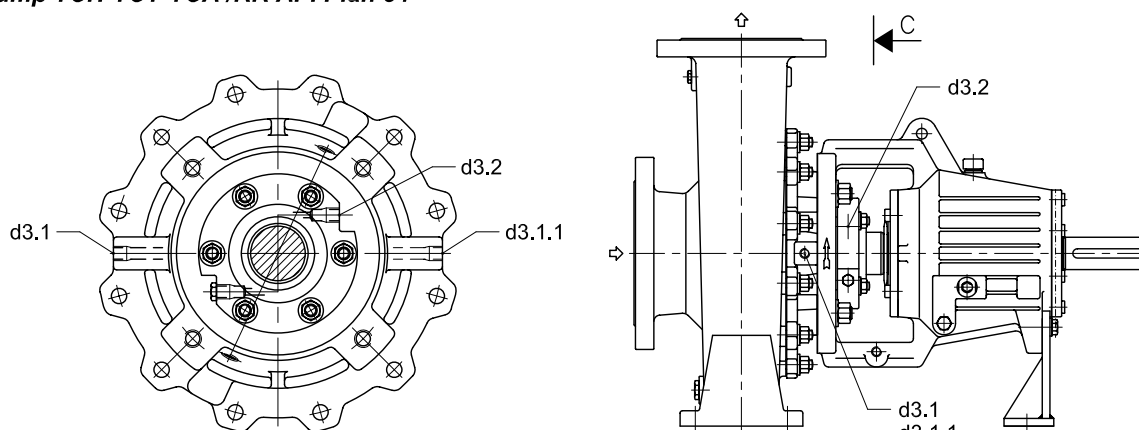
Foro flussaggio interno Plan 01
Internal flushing hole Plan 01



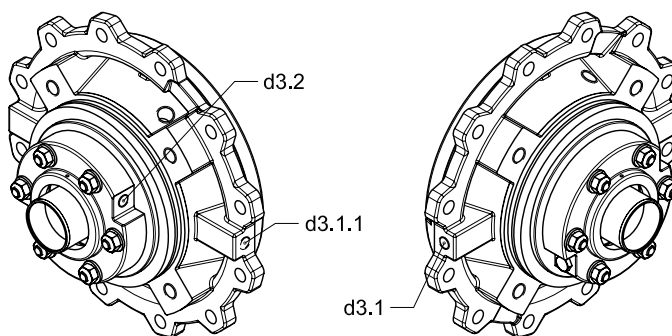


4

POMPA TCH-TCT-TCA /RR API Plan 54
Pump TCH-TCT-TCA /RR API Plan 54



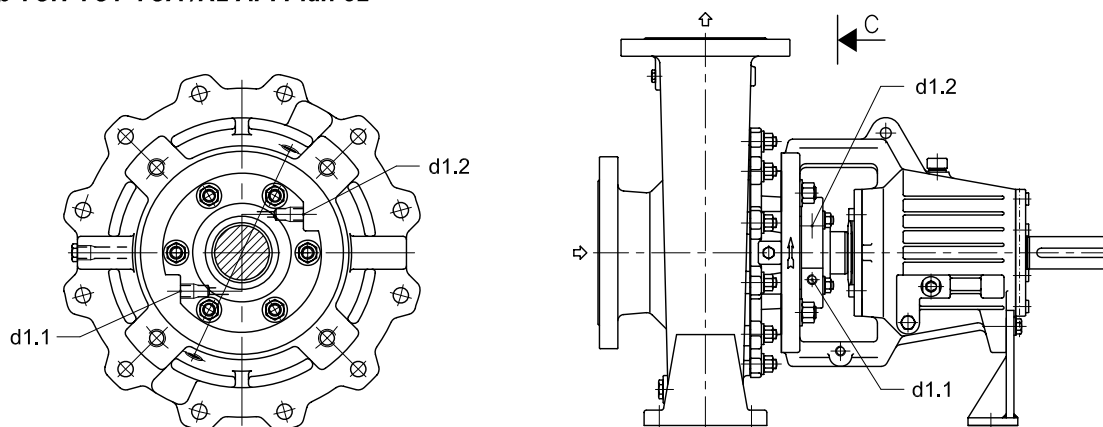
PARTICOLARE VISTA C
Detail of view C



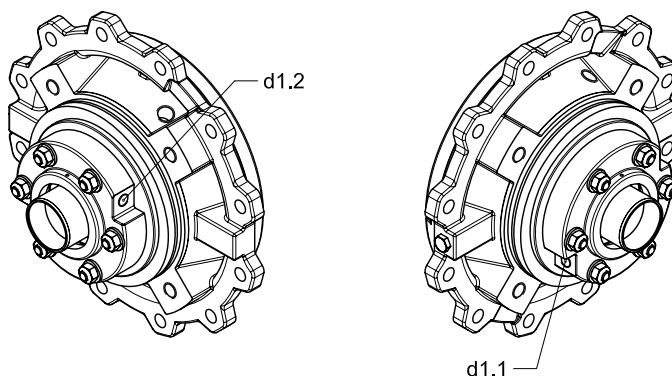
d3.1.1 Connessione dal lato opposto valida solo per pompa TCH 150-250/1X gr.3
d3.1.1 Connection from the opposite side valid only for pump TCH 150-250/1X gr.3

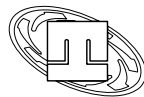
5

POMPA TCH-TCT-TCA /R2 API Plan 52
Pump TCH-TCT-TCA /R2 API Plan 52



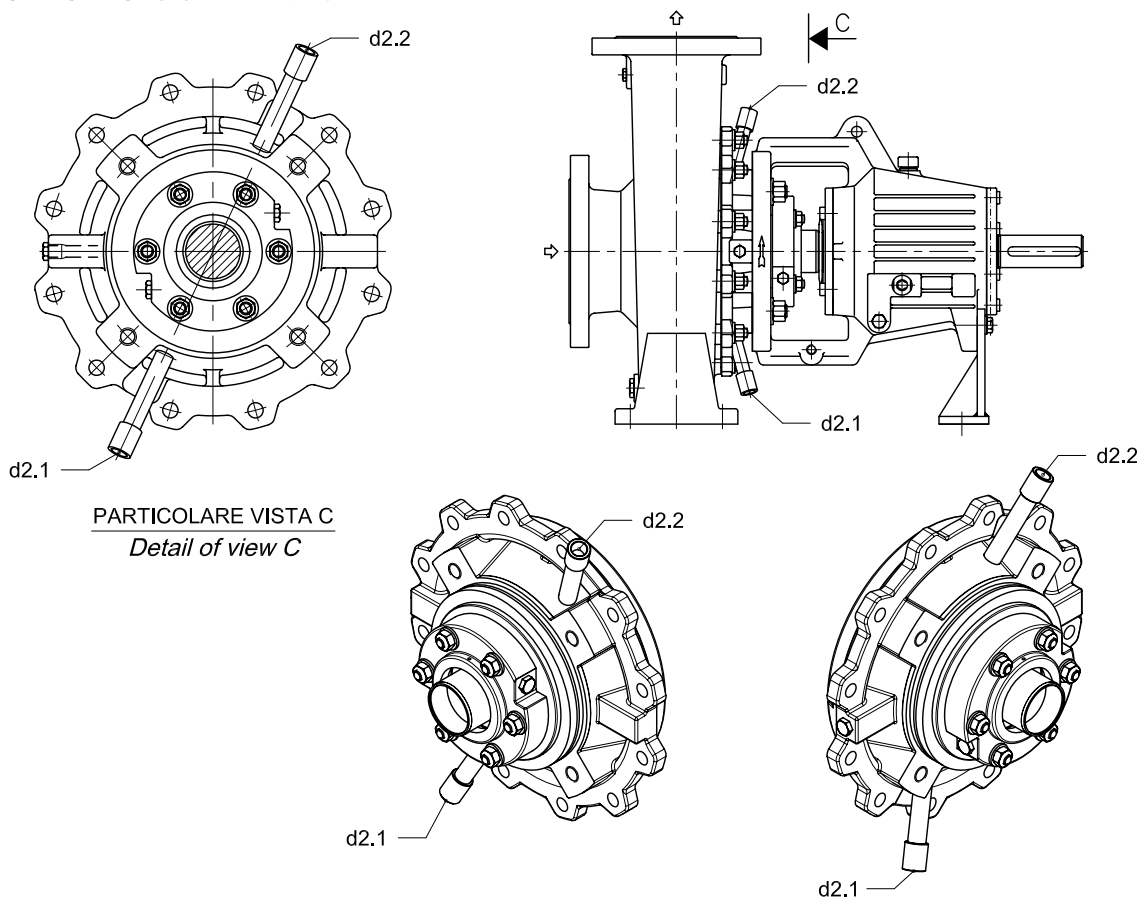
PARTICOLARE VISTA C
Detail of view C





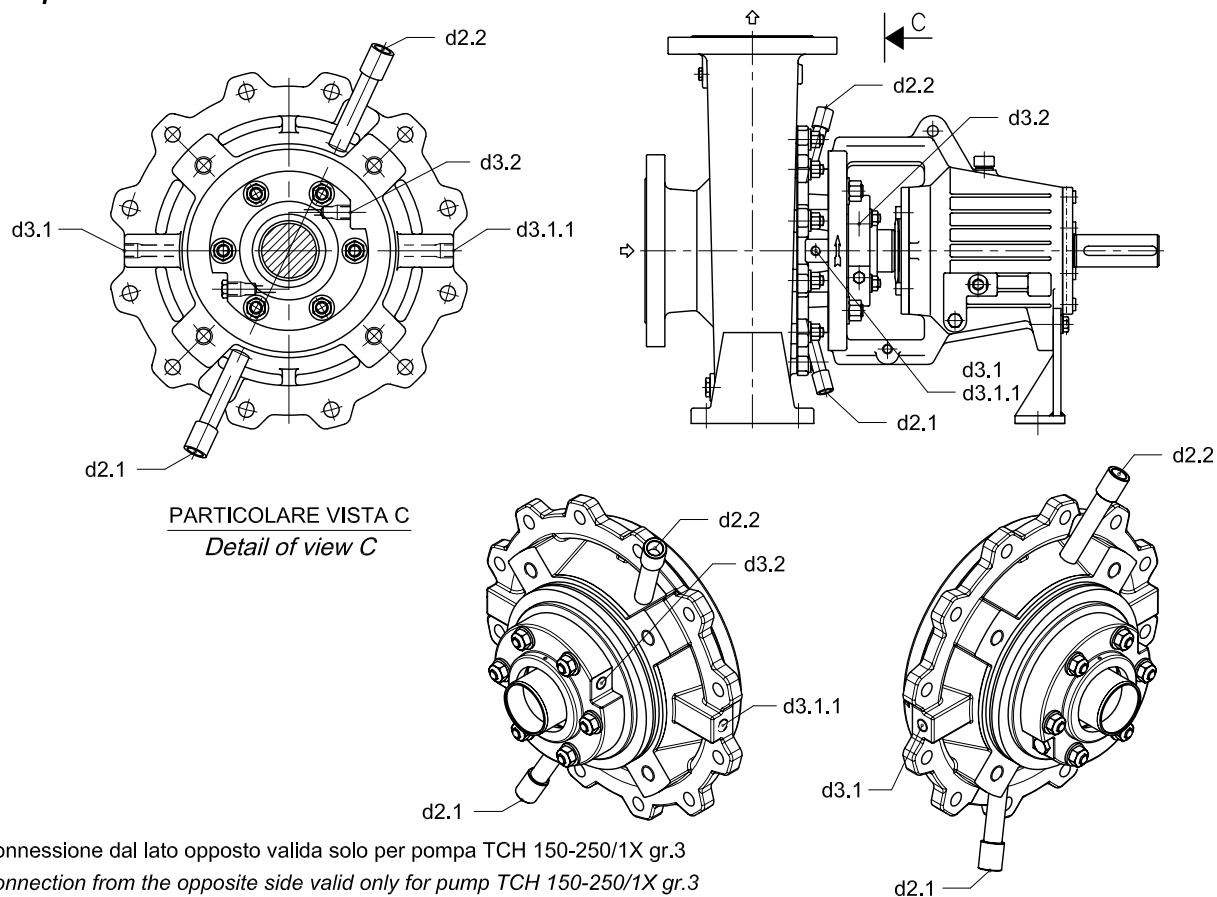
6

POMPA TCH-TCT-TCA /R/T API Plan 01
Pump TCH-TCT-TCA /R/T API Plan 01



7

POMPA TCH-TCT-TCA /RR/T API Plan 54
Pump TCH-TCT-TCA /RR/T API Plan 54



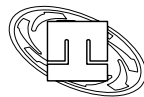
d3.1.1 Connessione dal lato opposto valida solo per pompa TCH 150-250/1X gr.3
d3.1.1 Connection from the opposite side valid only for pump TCH 150-250/1X gr.3

RIF. - Ref.: A.P./C.T.

SOSTITUISCE - Replaces: 9000.673.01.04

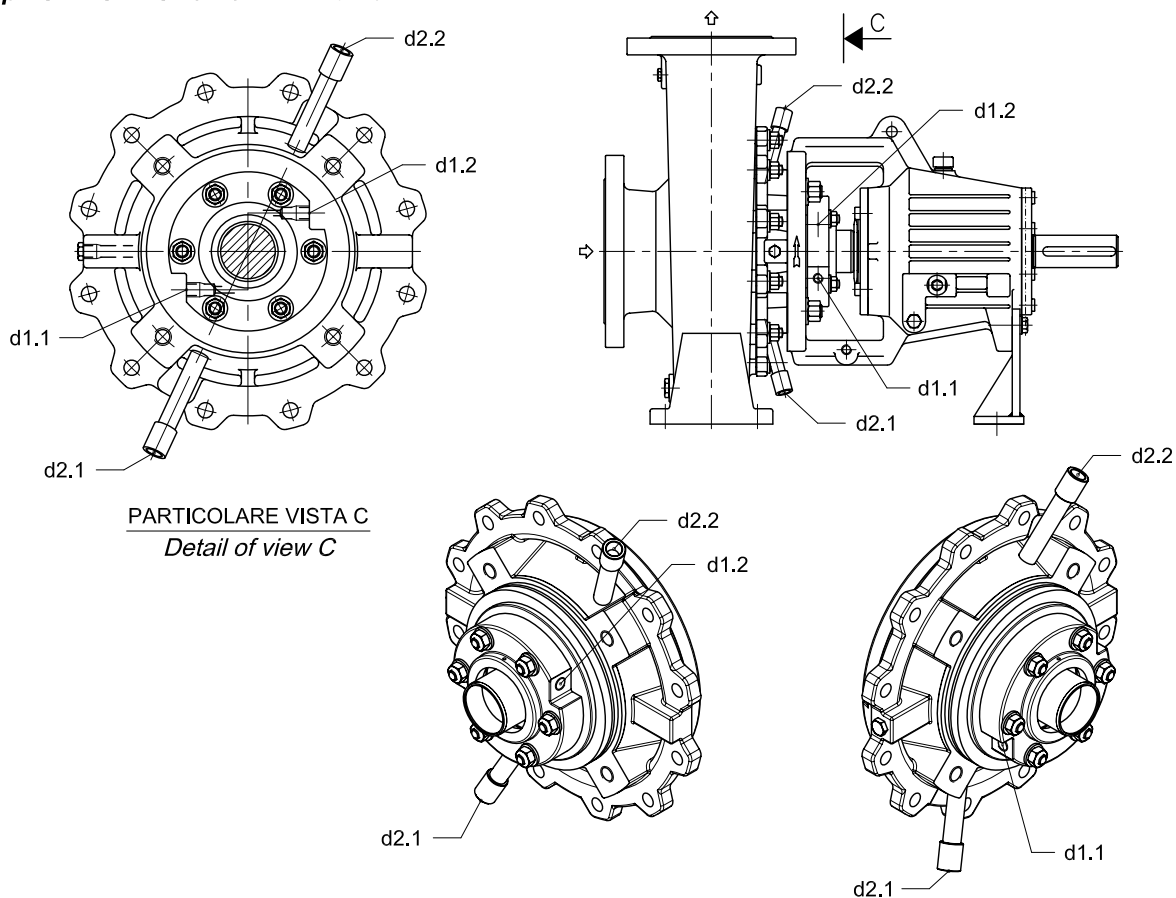
DATA - Date: Maggio '12 - May '12

N°. 9000.673.02.04



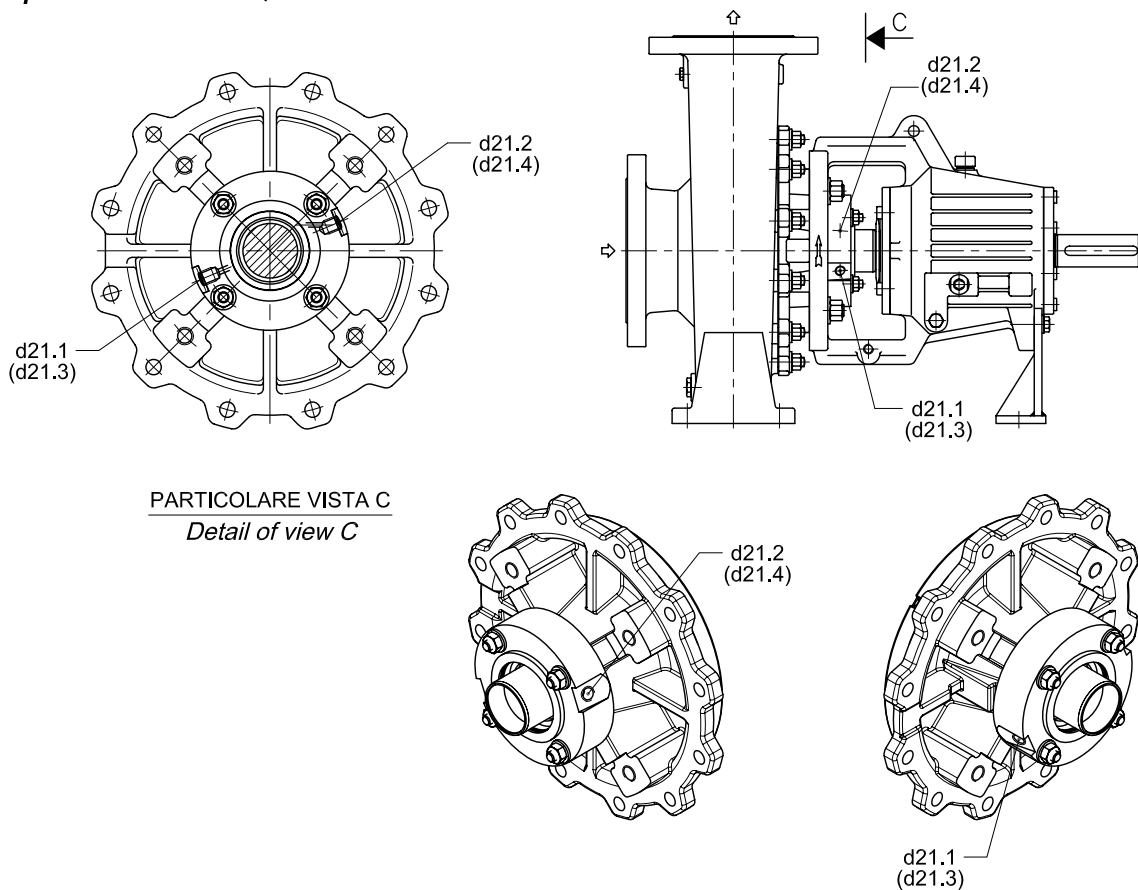
8

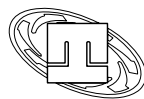
POMPA TCH-TCT-TCA /R2/T API Plan 52
Pump TCH-TCT-TCA /R2/T API Plan 52



9

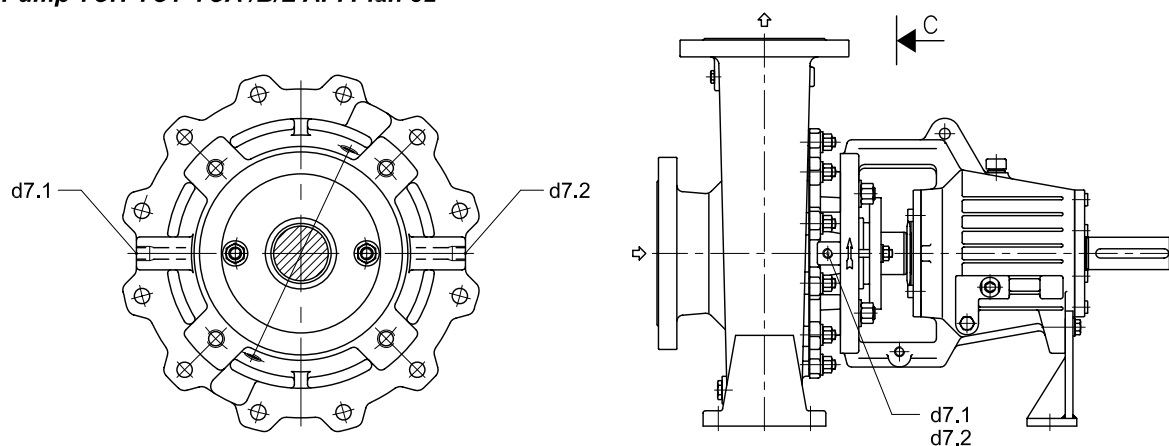
POMPA TCH-TCT-TCA /C/Q API Plan 01/61-62
Pump TCH-TCT-TCA /C/Q API Plan 01/61-62





10

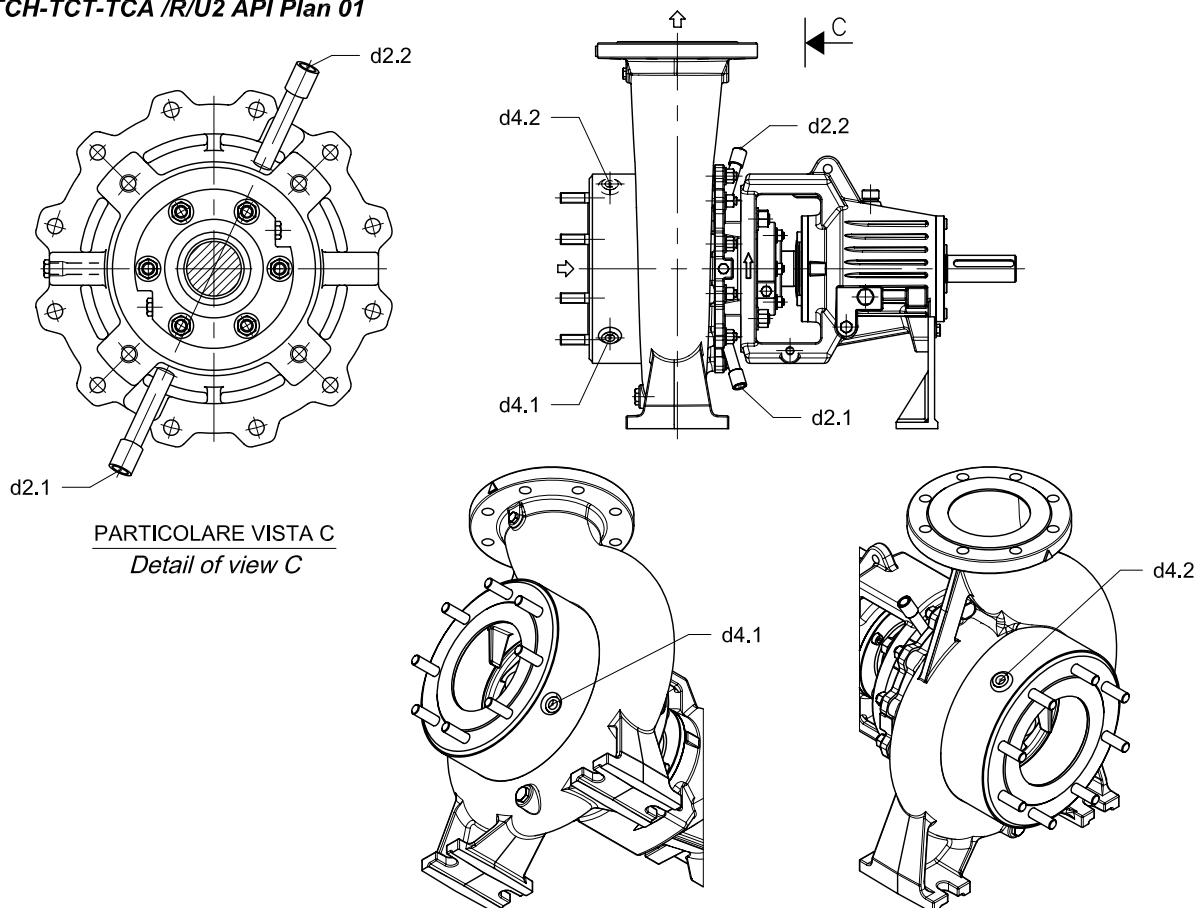
POMPA TCH-TCT-TCA /B/L API Plan 32
Pump TCH-TCT-TCA /B/L API Plan 32



PARTICOLARE VISTA C
Detail of view C

11

POMPA TCH-TCT-TCA /R/U2 API Plan 01
Pump TCH-TCT-TCA /R/U2 API Plan 01



PARTICOLARE VISTA C
Detail of view C

RIF. - Ref.: A.P./C.T.

SOSTITUISCE - Replaces: -

DATA - Date: Aprile '12 - Aprile '12

N°. 9000.673.01.06